



READ THESE INSTRUCTIONS THOROUGHLY BEFORE INSTALLATION KEEP THESE INSTRUCTIONS FOR FUTURE REFERENCE.

IMPORTANT:

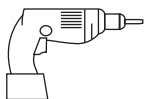
This product must be installed by a qualified electrician or competent person, and in accordance with current building and IET wiring regulations.

BOX CONTENTS

This lighting fixture has been properly packed to avoid damage during transit. Before commencing with the installation carefully inspect the luminaire to confirm there is no damage. **DO NOT INSTALL** if any damage has occurred to the fixture or any of its components.

- Light Fitting
- Instruction Manual
- Fixing Kit

TOOLS REQUIRED



- Drill

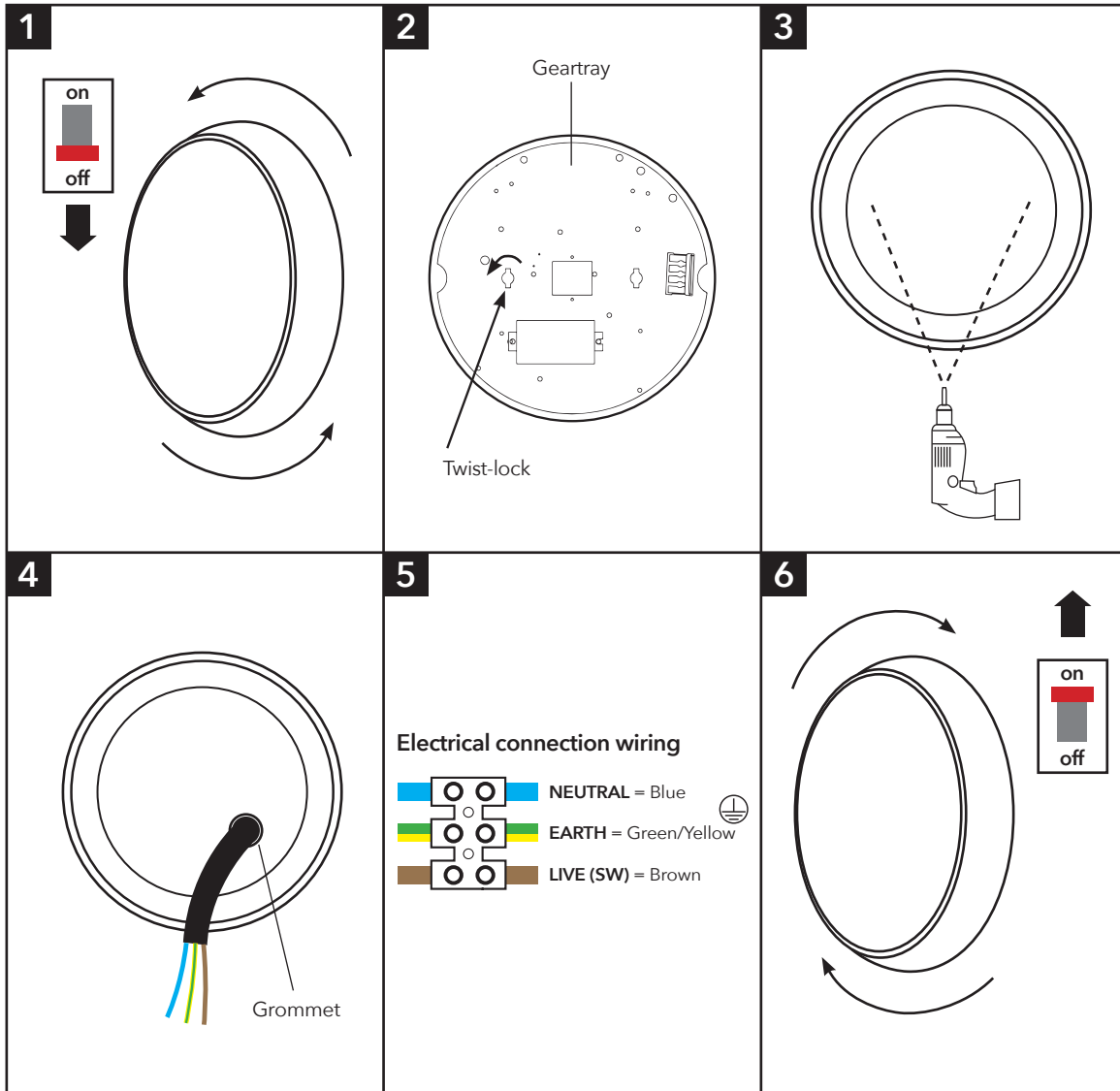


- Screwdriver



- Cable

INSTALLATION INSTRUCTIONS



PLEASE READ THESE INSTRUCTIONS BEFORE INSTALLATION.



WARNING: Risk of electric shock! Isolate the mains power before proceeding.

- Turn off the mains power before performing inspections, installation, or removal
- Verify that the supply voltage is correct by comparing it with the luminaire label information
- It is the installers responsibility to ensure installation is suitable for the total load of the luminaire(s). The supply cable, fuses/circuit breakers must be correctly rated for the electrical load and considering for any transient inrush currents that may occur
- Do not perform insulation strength or resistance tests on installed luminaire(s) connected

1. Remove the diffuser by gently twisting anti-clockwise
2. Twist the locking tabs to loosen and remove the geartray
3. Drill appropriately sized holes through your chosen mounting points in the base
4. Install grommet to your chosen cable entry and pierce, making a hole just large enough to make a tight fit around the incoming mains cable. Carefully thread cable through grommet
5. Secure the fitting in place. Note: If protection against ingress of moisture is required the heads of screws must be covered with a silicone or similar sealant
6. Wire as per diagram (5)
7. Please see overleaf for instructions on how to set all sensor versions
8. Replace the geartray and twist the locking tab to secure in place, then refit the diffuser
9. Re-connect the mains supply

^Lm/W figures based on 4000K output.

Rutland 3CCT Bulkhead

DISPOSAL

Disassembly instructions for end of life disposal available on website.

Disposal of Electronic Equipment WEEE Directive 2002/96/EC This product falls within the scope of the Waste Electrical & Electronic Equipment Directive (WEEE), which means the product should not be disposed of as normal household waste. Please recycle where facilities exist or check with your Local Authority. RoHS - All components and materials used in this product are RoHS 2002/95/EC compliant.

Specifications may change from time to time. The information contained in this leaflet is for guidance only and should not be considered as always accurate and should be treated as not representative.

WARRANTY

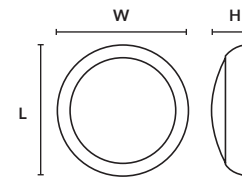
This luminaire is warranted for a period of 5 years from the date of purchase**. The backup battery pack in the emergency version is warranted for a period of 24 months. The warranty could be invalidated should the light fitting not be installed according to these instructions, outside the scope of the specification or the product has been altered or tampered with in any way. Please see website for terms and conditions.

PRODUCT TEMP SPECIFICATION

Standard -20 to +40°C
Emergency 0 to +30°C

RUTLAND BULKHEAD DIMENSIONS

Part No.	Description	Watts	L (mm)	W (mm)	H (mm)	Weight
430400	Rutland 3CCT Bulkhead	9W	271	271	92	0.6Kg



Installation Engineers Contact Details:		Luminaire Reference / Location
Name:	Tel:	

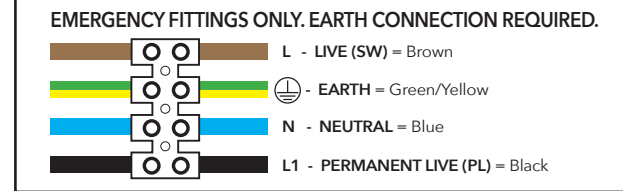
Luminaire Details:	Full Recharge Duration 24 Hours	Emergency Duration 3 Hours	Lamp Type LED

ROUTINE TEST RECORD										
Type Test	Year 1		Year 2		Year 3		Year 4		Year 5	
	Signed	Date	Signed	Date	Signed	Date	Signed	Date	Signed	Date
Functional 1										
Functional 2										
Functional 3										
Functional 4										
Functional 5										
Functional 6										
Functional 7										
Functional 8										
Functional 9										
Functional 10										
Functional 11										
3hr Duration 12										

Wiring instructions for units equipped an with EMERGENCY function

Emergency lighting luminaries must be installed and maintained in accordance with the emergency lighting standard BS 5266-1

1. Connect incoming earth cable to 'Earth' terminal on connector block.
 2. Connect incoming neutral cable to 'Neutral' terminal on connector block.
 3. For the emergency unit to work correctly, please ensure that an uninterrupted permanent live feed is present and is connected directly to the 'Permanent Live' terminal of the mains terminal block. Please ensure there are no switches, PIRs etc within the permanent live feed, constant switching of the emergency pack could result in premature battery failure.
 4. Connect incoming switched live cable to the terminal marked "Switched Live"
- NOTE: If there is no switch live feed and the unit has a microwave sensor, simply bridge across from the "Permanent Live" to the Switch Live" on the mains terminal block.**
5. There should be a loose flying lead connected to the battery. This needs to be attached to the flying lead from the emergency control unit.
 6. Following power up the green LED indicator should illuminate to indicate charging. If power to the unit is disrupted or isolated, the unit indicating green LED will switch off, triggering the emergency LEDs to illuminate.
 7. Please allow 24 hours charge before first emergency test.



This product contains a light source of energy efficiency Class F.